

WELLCLIMA PLUS

UNIVERSAL A/C
REMOTE CONTROL

OPERATING INSTRUCTIONS

other languages on wellclima.com

- Compatible with 99% brands
- Some brands require no pairing
- Multiple pairing modes available
- Battery replacement memory
- Backlight
- LED Flashlight



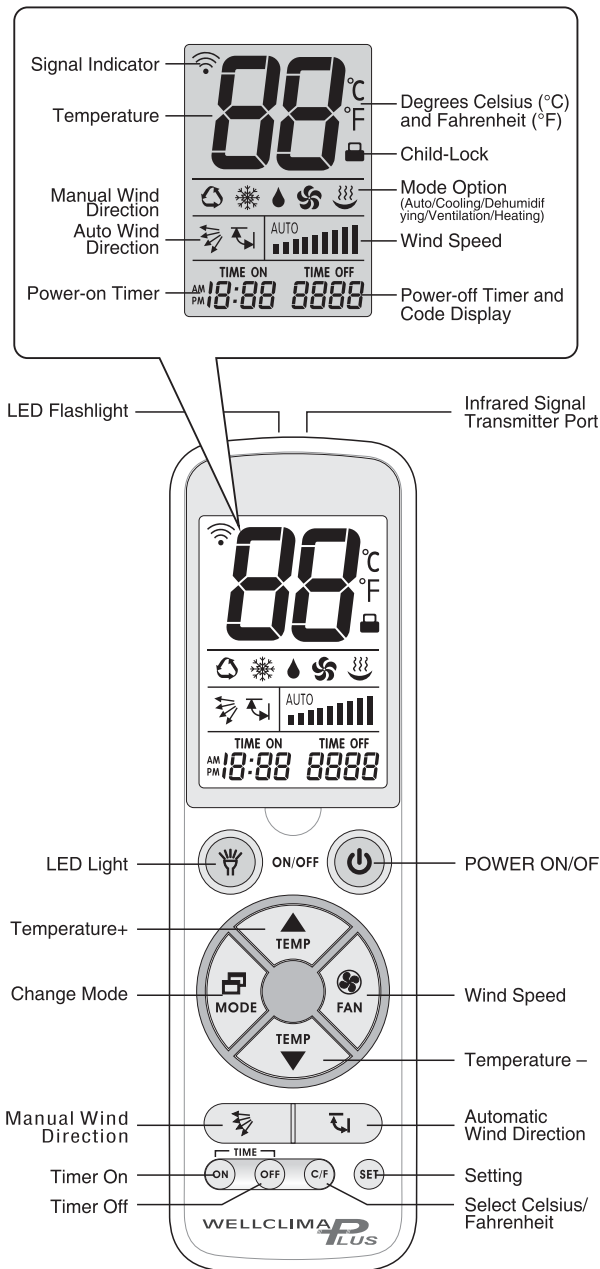
Thank you for choosing a Wellclima product.

You have purchased one of the best remote controls on the market, covered by legal guarantee. For warranty information please contact us.

Please read the Operating Instructions carefully before using the product and store it in a safe place for future reference

www.wellclima.com

COMPONENTS



Before use please insert two alkaline batteries 1,5V type AAA and plug-in the Air conditioner to the electric line.
(batteries not included)

SETUP METHODS

The remote control can be set to 3 different modes. Choose mode A if the brand of your air conditioner is among those in the image below, or modes B or C for all other brands.

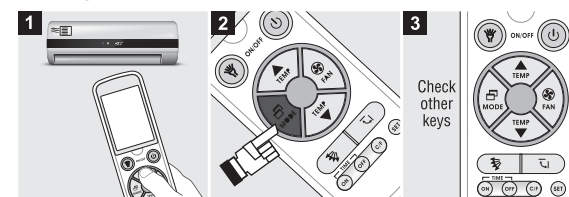
A BRAND POINT-TO-POINT QUICK SEARCH

1. Aim the remote control towards the air conditioner receiver window.
2. Press and hold the appropriate code button corresponding to your A/C brand (for example ▲ button for LG and Samsung brand) until the air conditioner turns on and you hear a 'beep' sound; release the button, and the setting is completed.

Brand code corresponding button

MODE	FAN	TEMP ▲
Gree/Hualing/Hisense	Daikin/Fujitsu/Carrier	LG/Samsung
		TEMP ▼
Hitachi/Panasonic	Sanyo/Sharp/Haier/Mitsubishi	Shinco/Aucma/AUX/Frestech/Yair

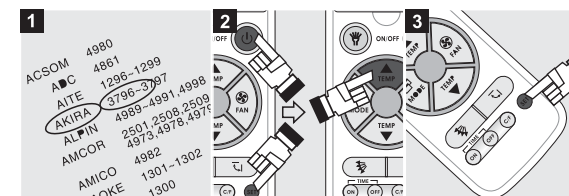
3. Check the button functions. If the buttons work correctly, the code setting is effective. If not, please repeat steps 2 and 3.



B MANUAL CODE INPUT

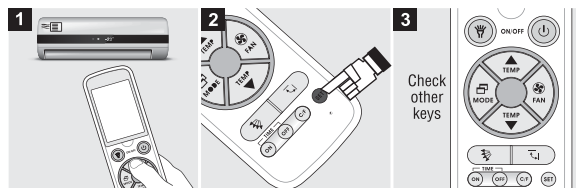
1. Connected to www.wellclima.com website, find air conditioner brand in the 'CODE LIST' of PLUS model and check the first set of codes.
2. Press and hold SET button, then press POWER button and hold them down. Release the two buttons when the model code '---' flashes on the screen window. Press 'TEMP▲' or 'TEMP▼' until the code found in Step 1 appears on the screen window (you can keep the TEMP keys pressed to scroll the codes faster).
3. Press the SET button to exit, check the button functions. If the device respond correctly the setting is finished, if not, please repeat steps 2 and 3 with next set of codes.

LOOK OUT: when the codes are separated by a - sign it means all the numbers between the first and the last (es LG 3600-3609 you have to test codes 3600, 3601, 3602.....>3609). If none of the codes work with your air conditioner or if your brand is not in the list don't worry, proceed with the Automatic Code Search.



C AUTOMATIC CODE SEARCH FOR APPLICABLE MODEL

1. Aim the remote towards the air conditioner receiver window.
2. Press and hold **SET** button, about 6 seconds later the model code '----' starts to flash, do not release the button until the air conditioner switches on automatically.
3. Release the **SET** button immediately when the conditioner turns on and check the button functions. If the buttons work correctly, the code setting is effective. If not, please repeat steps 2 and 3.
4. A complete scan of all codes takes about 30 minutes. Do not stop the search before, or before the air conditioner switches on.



INSTRUCTIONS FOR ADDITIONAL FUNCTIONS

1. **Celsius/fahrenheit function "C/F"**
Press "C/F" button to choose "Celsius" or "Fahrenheit".
2. **Child lock function**
Lock: Keep pressed **SET** and then **M.SWING** buttons. The screen displays the **Child Lock** icon.
Unlock: Keep pressed **SET** and then **M.SWING** buttons. The 'Child Lock' icon disappears.
3. **Clock function setting**
 - a. Keep pressed **SET** and then press **MODE** buttons until the hour digits flash.
 - b. Press the **TEMP ▲** (or **TEMP ▼**) button to increase (or decrease) by 1 hour.
 - c. Press the **SET** button to complete setting the hour. Now the minute digits flash. Press the **TEMP ▲** or **TEMP ▼** button to set the minutes.
 - d. After the minutes are set, press the **SET** button to exit clock setting.
4. **Timer on/off function**
The remote control is equipped with the timer function of the original AC remote. Press the **TIME ON** or **TIME OFF** buttons (one press for one hour), the air conditioner timer light will switch on.
* This means that the air conditioner timer function is now operational.
This function requires the air conditioner to have the timer function, or else this button will not work.

REMOTE CONTROL FUNCTIONS



DISPLAY SYMBOLS



RESTORE TO FACTORY SETTING

Press and hold **SET** button and then press **FAN** button and hold them down about 3 seconds to restore the factory settings.

Battery replacement memory

The remote control's chip has a built-in memory function, ensuring that there is no need reset for a short-term power off like battery replacement etc.

Backlight

The backlight covers the whole panel. Press any button to light it and it will switch off after 10 seconds if there is no operation.

LED Flashlight

Press and hold the "Light" button to switch on the LED light. Release it to switch it off.

ANY PROBLEMS?

This remote control is compatible with 99% of brand of air conditioners, we perform compatibility tests with the various brands and the codes are constantly updated.

It can operate only if the air conditioner receiver works well. To check if the new remote works (or even the old one) we suggest you to do this test: frame the led that you find on the top edge with a digital camera or a smartphone (not iphone), press the on-off button several times, through the camera you will see the LED light up slightly. If the led turns on the remote control transmits, if you have tried the various setup methods and the air conditioner has never turned on it is probable that the problem is in the receiver inside the control unit, in this case you must contact the service.

If you find any other problems or remote control cannot be used appropriately, please visit **HELP and FAQs** page on our website www.wellclima.com or contact us and we will provide our best service for you.

In compliance with directive 2012/19/EU D.L. N°49/2014 Multiservizi (owner of wellclima brand) being the suppliers of this products issues the following information: it is mandatory not to dispose of the RAEE as if they were urban waste, but to carry out a separate collection of them.
When delivering the equipment upon purchase of a new one, the same manufacturer shall provide in re-using, recycling it or other forms of recycle through measures implemented and approved by the public administrations. Such information is supplied in order to prevent potential effects on the environment and human health due to the presence of dangerous substances in electronic equipments or due to an improper use of the same.
Therefore every electronic equipment sold shall be subject to this directive and shall be marked with the symbol shown here below.

All rights reserved - Copyright © Multiservizi
Unauthorized reproduction of all or part of this guide are prohibited.
Imported by Multiservizi - Capriano del Colle - BS - Italy
Design and technical parameters may vary without notice.

